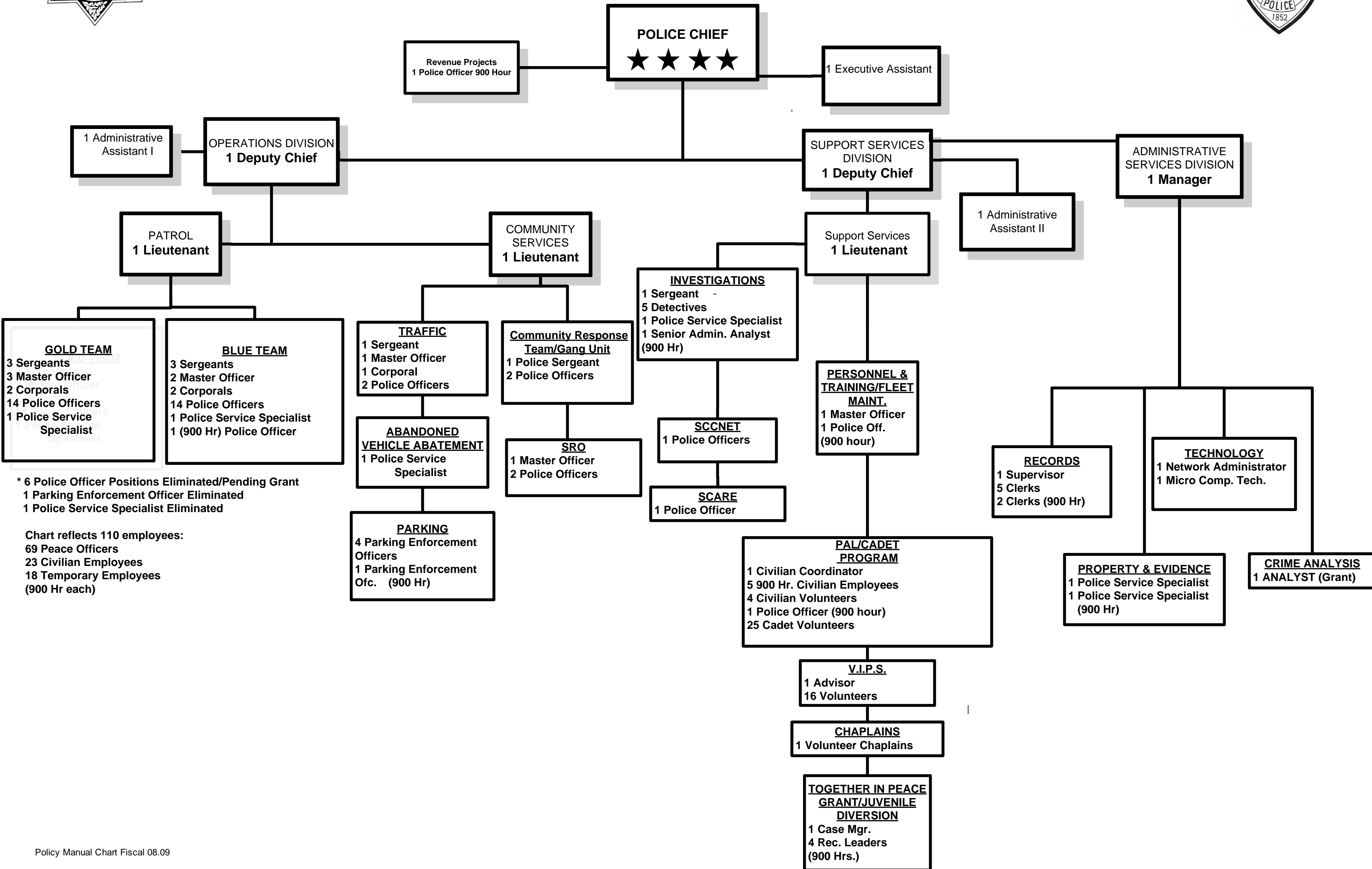




WATSONVILLE POLICE DEPARTMENT

ORGANIZATIONAL STRUCTURE FISCAL YEAR 2009-2011



* 6 Police Officer Positions Eliminated/Pending Grant
 1 Parking Enforcement Officer Eliminated
 1 Police Service Specialist Eliminated

Chart reflects 110 employees:
 69 Peace Officers
 23 Civilian Employees
 18 Temporary Employees (900 Hr each)